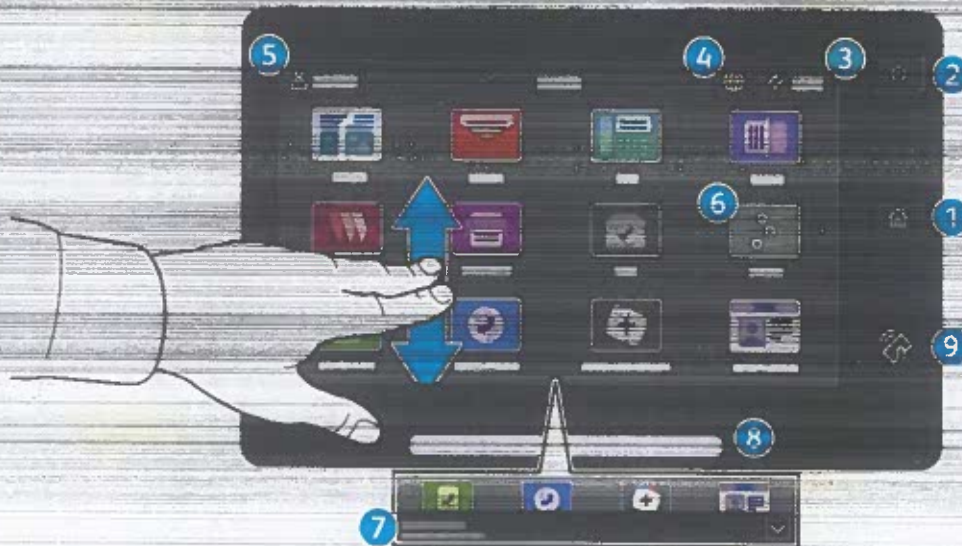


Control Panel

Available apps can vary based on your printer setup. For details about apps and features, refer to the *User Guide*.



- 1 Home returns to the main app screen.
- 2 Power/Wake starts the printer or provides options to sleep, restart or power off the printer.
- 3 Reset restores settings to their default values in all apps.
- 4 Language provides choice of screen languages.
- 5 Log In provides special access to tools and settings.
- 6 Device app provides access to printer information and settings.
- 7 Notification banner shows printer status and warnings. To see all notifications, touch the banner. To close the banner, touch the down arrow.
- 8 Status LED indicates printer status. For detailed information, refer to the *User Guide*.
- 9 NFC Area allows pairing with a mobile device to print or scan from an app.

Device app

The Device app provides access to supplies status, printer information, and settings. Some menus and settings require log in with the administrator name and password.



Billing and Usage Information

In the Device features menu, to view basic impression counts, touch **Billing/Usage**. To view detailed usage counts, touch **Usage Counters**. The list provides detailed impression count categories.

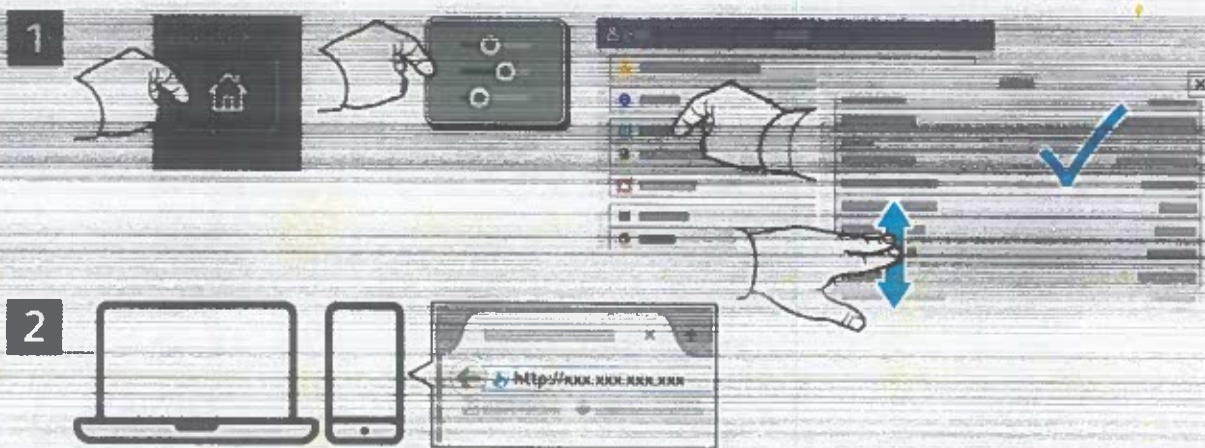


Embedded Web Server

The Xerox® Embedded Web Server enables you to access printer configuration details, paper and supplies status, job status, and diagnostic functions over a network. You can also manage fax, email, and address books.

To connect, in a Web browser, type the printer IP address. The network IPv4 address is available on the control panel touch screen. Touch **Device app > About**, then scroll down.

For details on using the Embedded Web Server, refer to the *User Guide* located on Xerox.com.



App Gallery

The Xerox App Gallery has a growing collection of productivity apps that you can install on your printer. Find the app on your home screen and create your login directly, or go to www.xerox.com/appgallery to log in and add your device. To simplify app installation, use the same name for your app gallery login credentials that you used for the printer login.

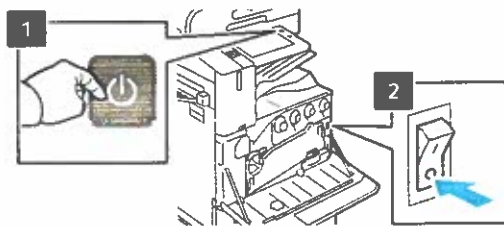
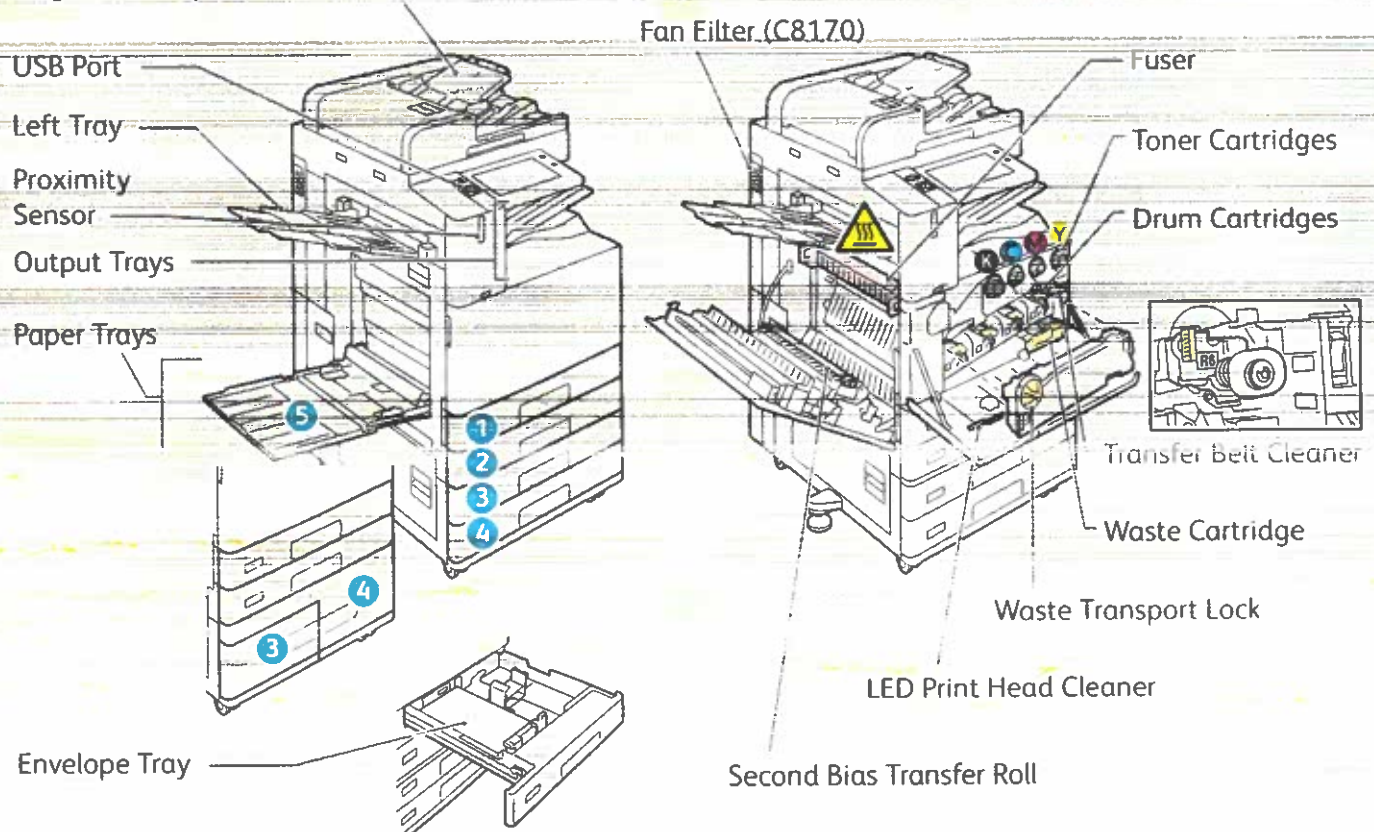


www.xerox.com/appgallery

Printer Tour

Optional accessories can be part of your printer setup. For details, refer to the *User Guide*.

Single-Pass Duplex Automatic Document Feeder (DADF)



To restart the printer, on the control panel, press the **secondary power switch** (1).

For full printer power off, press the **secondary power switch** (1). Behind the front cover, press the **main power switch** (2).

To select sleep mode, press the **secondary power switch** (1). At the printer control panel touch screen, touch a selection.

Paper Handling

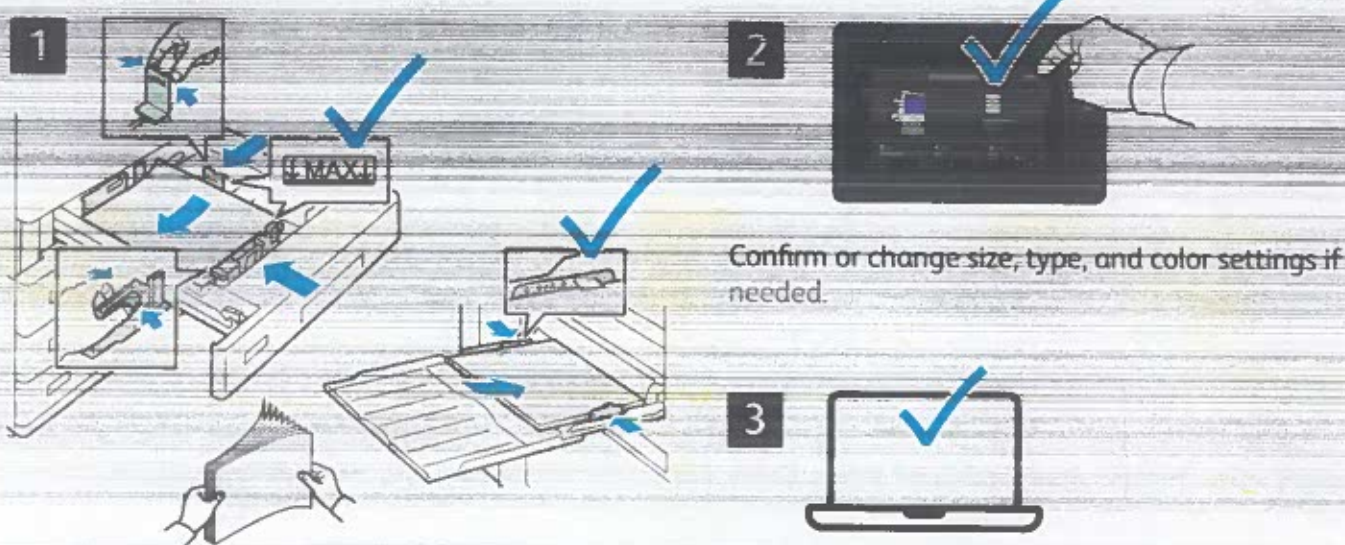
For a complete list of paper that works with your printer, see the Recommended Media List at:

www.xerox.com/rmlna (U.S. and Canada)

www.xerox.com/rmleu (Europe)

For details about trays and paper, refer to the *User Guide*.

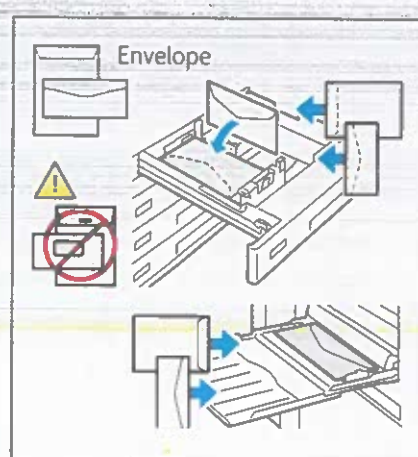
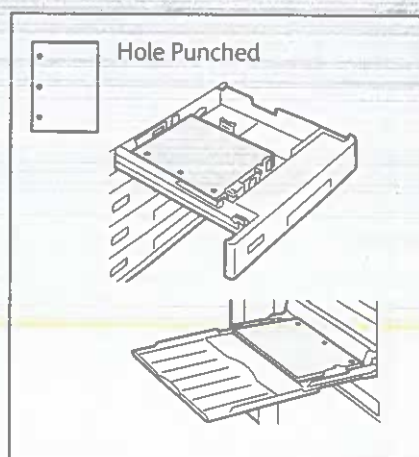
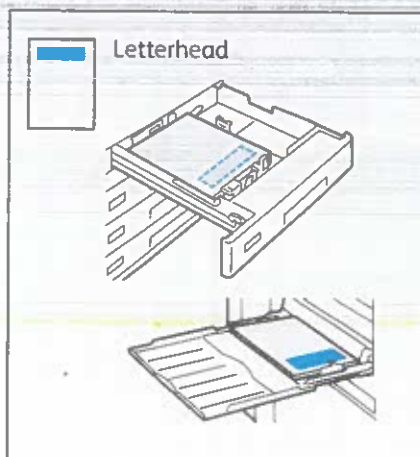
Loading Paper



For the best results, fan the edges of the paper. Adjust the guides to fit the paper size. Do not load paper above the maximum fill line.

When printing, select options in the print driver.

Paper Orientation



Copying

For details, refer to the *User Guide*.

1



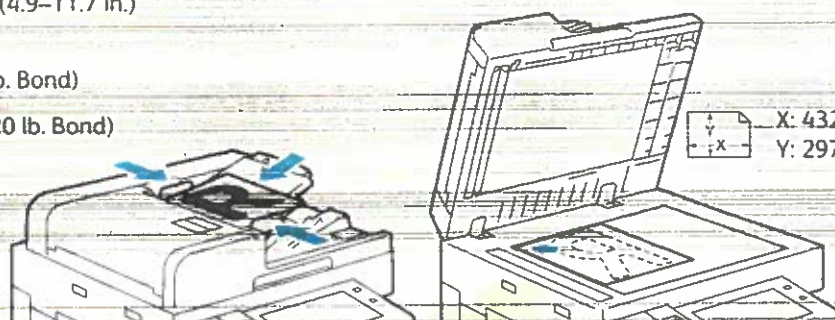
X: 85–432 mm (3.3–17 in.)
Y: 125–297 mm (4.9–11.7 in.)



38–128 g/m²
(26 lb. Text–34 lb. Bond)



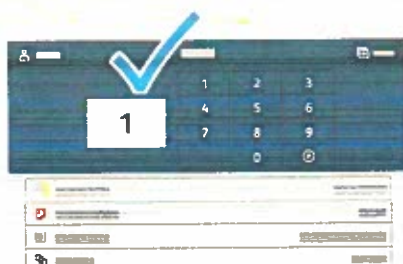
≤130 (80 g/m², 20 lb. Bond)
C8170: ≤250



X: 432 mm (17 in.)
Y: 297 mm (11.7 in.)

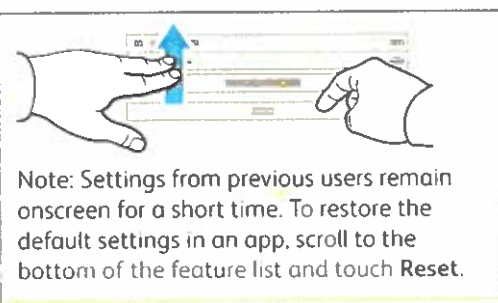
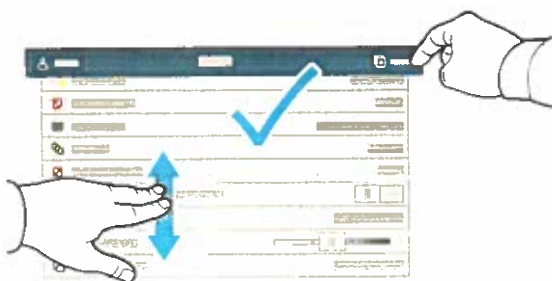
Load the original documents.

2



Touch **Copy**, then select the number of copies.

3



Note: Settings from previous users remain onscreen for a short time. To restore the default settings in an app, scroll to the bottom of the feature list and touch **Reset**.

Select feature settings from the list, then touch **Start**.

Scanning and Emailing

If the printer is connected to a network, you can select a destination for the scanned image at the printer control panel.

This guide defines techniques to scan documents without preparing special setups:

- Scanning documents to an email address.
- Scanning documents to a saved Favorite, Address Book listing, or USB Flash Drive.
- Scanning documents to the Default Public folder on the printer hard drive, and retrieving them using your Web browser.

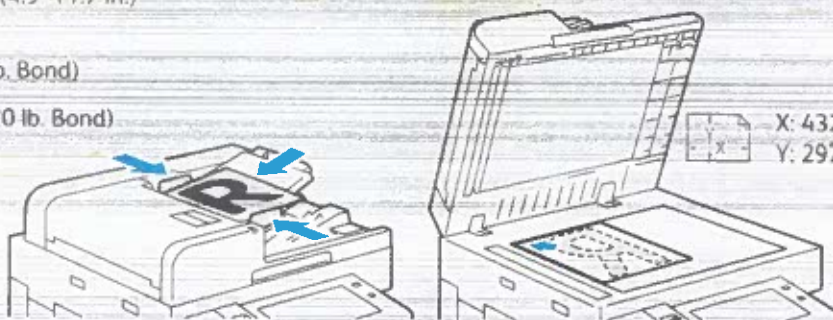
For details and more scan setups, refer to the *User Guide*. For details about address book and workflow template setup, refer to the *System Administrator Guide*.

1

X: 85–432 mm (3.3–17 in.)
Y: 125–297 mm (4.9–11.7 in.)

38–128 g/m²
(26 lb. Text–34 lb. Bond)

≤130 (80 g/m², 20 lb. Bond)
C8170: ≤250



X: 432 mm (17 in.)
Y: 297 mm (11.7 in.)

Load the original documents.

2



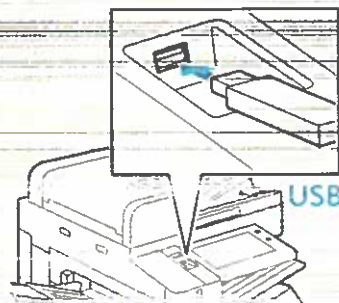
Press **Home**, then to email the scan, touch **Email**. To scan to the Default Public Folder or a USB Flash Drive, touch **Workflow Scanning**. If your scan destination is stored in the Address Book or saved as a Favorite, touch **Scan To**.

3



For Email, touch **Manual Entry**, type the email address using the touch screen keypad, then touch **Add**. To add more than one email address to the list, touch **Add Recipient**. To type a subject line for the email, touch **Subject**. To select saved email addresses, use the Device Address Book or select from Favorites.

For Workflow Scanning, touch **Default Public Folder**, or insert your USB Flash Drive.

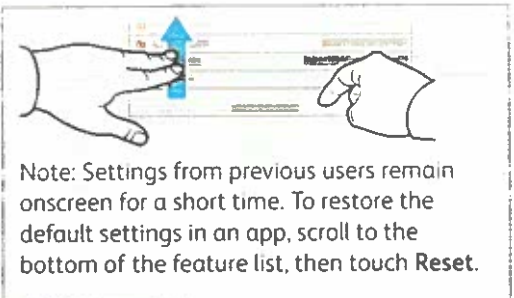


For Scan To, touch a destination type, then enter the appropriate information. To add more than one destination to the list, touch **Add Destination**.

4

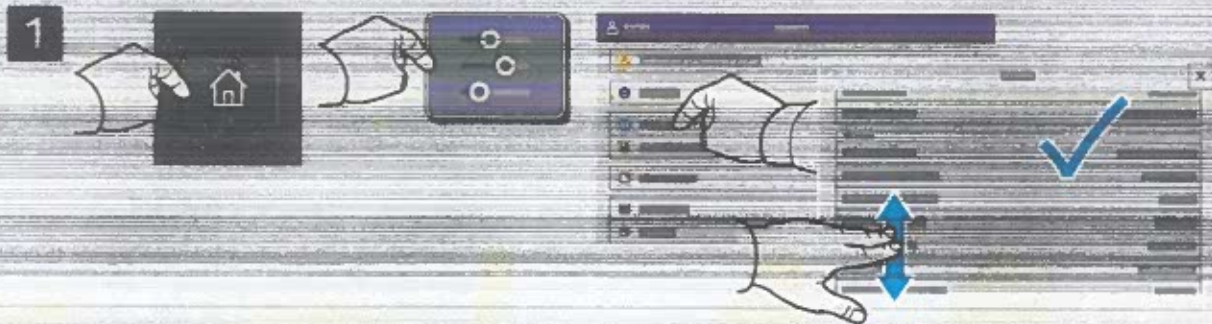


Change the settings as needed, then touch **Scan**, or for Email, touch **Send**.



Retrieving Scan Files

To download your scanned images from the Default Public Folder on the printer, use the Embedded Web Server. You can set up personal folders and workflow scanning templates in the Embedded Web Server. For details, refer to the *User Guide*.



Note the printer IP address on the touch screen. If the IP Address does not appear in the top of the touch screen, press Home, touch **Device** > **About** then scroll to check the IP Address.



In a Web browser, type the printer IP address, then press **Enter** or **Return**.



Click the **Scan** tab.

4

4.1

4.2



Select the **Default Public Folder**, then find your scan in the list. To download the scan, click **Go**.



To refresh the list, click **Update View**.

To save the file to your computer, select **Download**.

To print the saved file again, select **Reprint**.

To permanently remove the stored job, select **Delete**.

To open a directory, select **Open**.

Faxing

You can send a fax in one of four ways:

- **Fax** scans the document then sends it directly to a fax machine.
- **Server Fax** scans the document then sends it to a fax server, which transmits the document to a fax machine.
- **Internet Fax** scans the document then emails it to a recipient.
- **LAN Fax** sends the current print job as a fax.

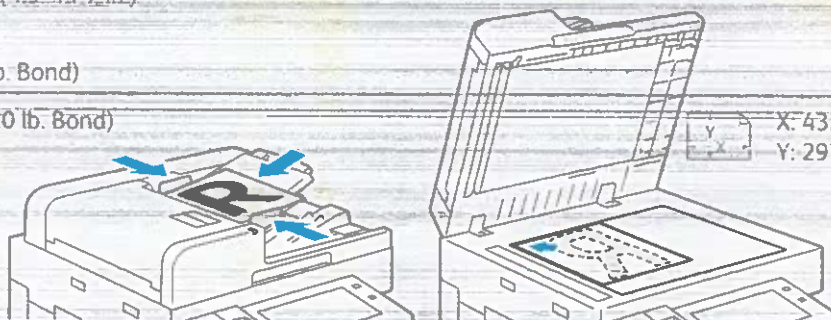
For details, refer to the *User Guide*. For details about LAN Fax, refer to the print driver software. For details about fax setup and advanced settings, refer to the *System Administrator Guide*.

1

X: 85–432 mm (3.3–17 in.)
Y: 125–297 mm (4.9–11.7 in.)

38–128 g/m²
(26 lb. Text–34 lb. Bond)

≤130 (80 g/m², 20 lb. Bond)
C8170: ≤250



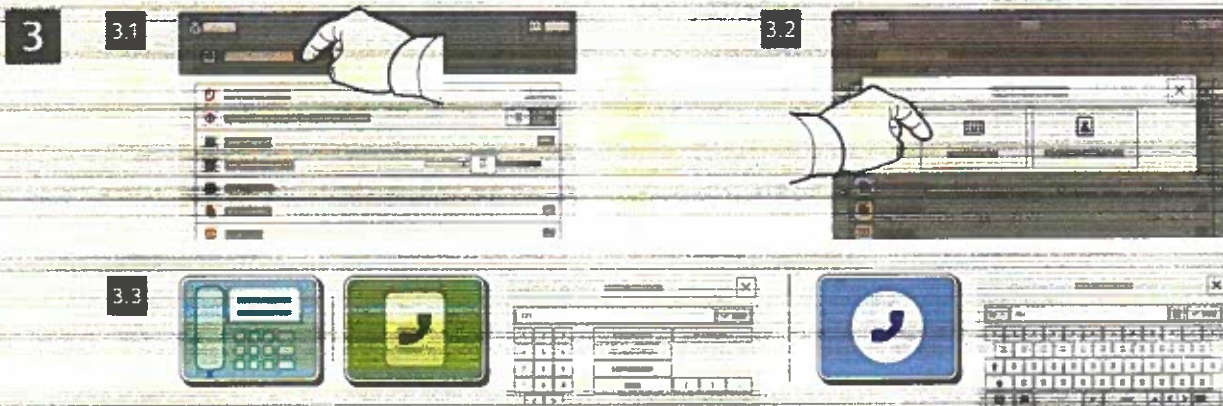
Load the original document.

2



To send the fax to a fax machine, press **Home**, then touch **Fax** or **Server Fax**.

To send the fax as an email attachment, touch **Home**, then touch **Internet Fax**.



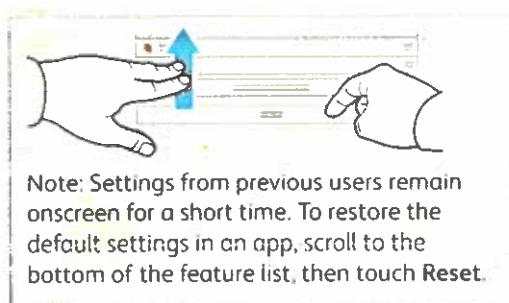
For fax numbers, touch **Manual Entry**, then enter the fax number using the touch screen alphanumeric keys and special characters. Touch **Add**. To add more fax numbers to the list, touch **Add Recipient**.

For Internet Fax email addresses, touch **Manual Entry**, then enter the email address using the touch screen keypad. Touch **Add**. To add more email addresses to the list, touch **Add Recipient**.

To select saved numbers, use the Device Address Book or Favorites. To select stored fax locations, use the Mailbox or Polling.

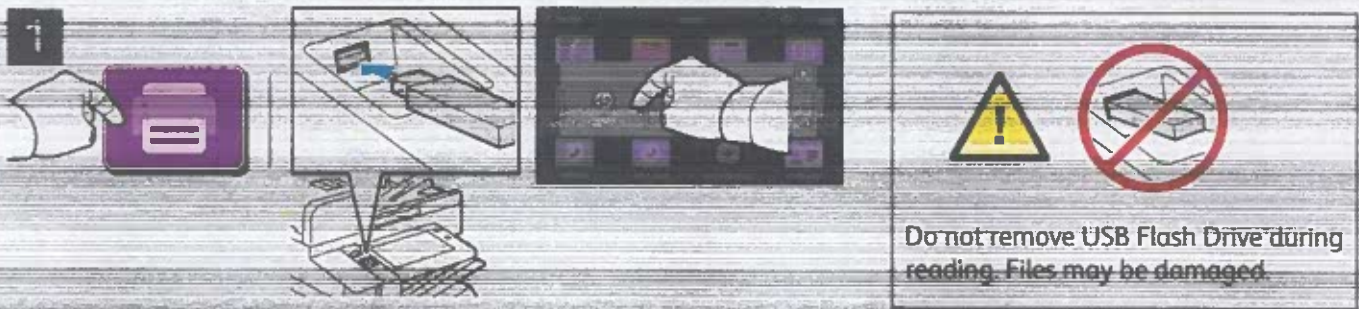


Change the settings as needed, then touch **Send**.

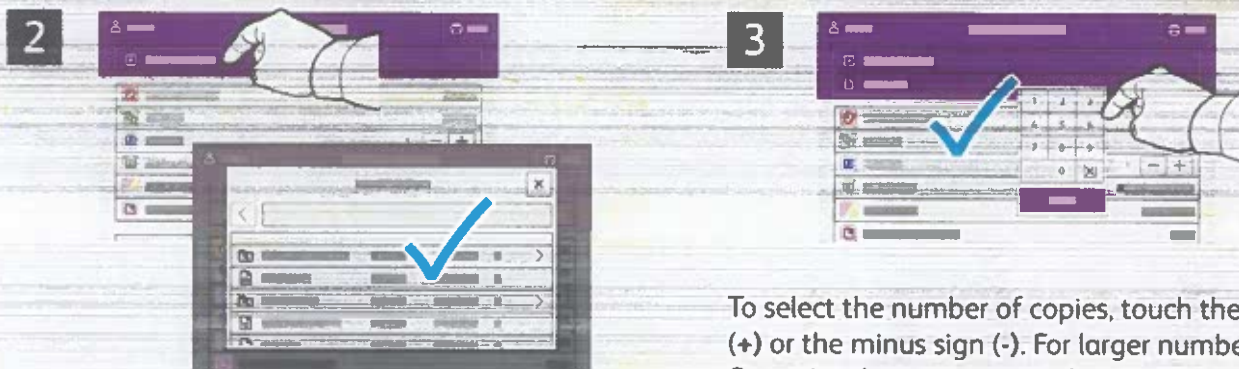


Printing from a USB Flash Drive

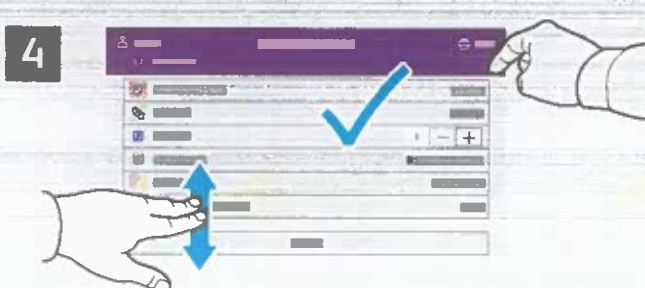
You can print .pdf, .tiff, .ps, .xps and other files types directly from a USB Flash Drive. For more information, refer to the *User Guide*.



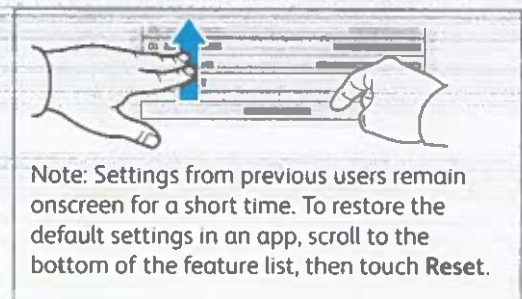
Touch **Print From** or insert your USB Flash Drive, then choose **Print From USB**.



Touch **Add Document**, then navigate to your files and select them.



Select settings as needed, then touch **Print**.



Printing Jobs Stored on the Printer

1



You can send a print job to save to the printer, then select the job from the printer control panel to print at a later time. Jobs can be saved in the public folder or be password protected. In the Xerox® printer driver, select **Properties (Windows)** or **Xerox Features (Mac OS)**, then **Job Type**. Select **Saved Job** or **Secure Print**. For Secure Print, type a passcode. Click **OK** and print the job.

2



Touch **Print From** then touch **Saved Jobs**. Select the **Default Public Folder** then select your print job.

3



Select settings from the list. To select the number of copies, touch the plus sign (+) or the minus sign (-). For larger numbers, touch **Quantity** then enter a number. Touch **Print**. To delete the job, in the printing screen and confirmation screen, touch **Delete**.

PostScript Font Listing

Internal Fonts:

AlbertusMT	ABCDEF abcdefg 0123456789 &?!.e
AlbertusMT-Italic	ABCDEF abcdefg 0123456789 &?!.e
AlbertusMT-Light	ABCDEF abcdefg 0123456789 &?!.e
AntiqueOlive-Bold	ABCDEF abcdefg 0123456789 &?!.e
AntiqueOlive-Compact	ABCDEF abcdefg 0123456789 &?!.e
AntiqueOlive-Italic	ABCDEF abcdefg 0123456789 &?!.e
AntiqueOlive-Roman	ABCDEF abcdefg 0123456789 &?!.e
Apple-Chancery	ABCDEF abcdefg 0123456789 &?!.e
Arial-BoldItalicMT	ABCDEF abcdefg 0123456789 &?!.e
Arial-BoldMT	ABCDEF abcdefg 0123456789 &?!.e
Arial-ItalicMT	ABCDEF abcdefg 0123456789 &?!.e
ArialMT	ABCDEF abcdefg 0123456789 &?!.e
AvantGarde-Book	ABCDEF abcdefg 0123456789 &?!.e
AvantGarde-BookOblique	ABCDEF abcdefg 0123456789 &?!.e
AvantGarde-Demi	ABCDEF abcdefg 0123456789 &?!.e
AvantGarde-DemiOblique	ABCDEF abcdefg 0123456789 &?!.e
Bodoni	ABCDEF abcdefg 0123456789 &?!.e
Bodoni-Bold	ABCDEF abcdefg 0123456789 &?!.e
Bodoni-BoldItalic	ABCDEF abcdefg 0123456789 &?!.e
Bodoni-Italic	ABCDEF abcdefg 0123456789 &?!.e
Bodoni-Poster	ABCDEF abcdefg 0123456789 &?!.e
Bodoni-PosterCompressed	ABCDEF abcdefg 0123456789 &?!.e
Bookman-Demi	ABCDEF abcdefg 0123456789 &?!.e
Bookman-DemiItalic	ABCDEF abcdefg 0123456789 &?!.e
Bookman-Light	ABCDEF abcdefg 0123456789 &?!.e
Bookman-LightItalic	ABCDEF abcdefg 0123456789 &?!.e
Carta	ABCDEF abcdefg 0123456789 &?!.e
Chicago	ABCDEF abcdefg 0123456789 &?!.e
Clarendon	ABCDEF abcdefg 0123456789 &?!.e
Clarendon-Bold	ABCDEF abcdefg 0123456789 &?!.e
Clarendon-Light	ABCDEF abcdefg 0123456789 &?!.e
CooperBlack	ABCDEF abcdefg 0123456789 &?!.e
CooperBlack-Italic	ABCDEF abcdefg 0123456789 &?!.e
Copperplate-ThirtyThreeBC	ABCDEF abcdefg 0123456789 &?!.e
Copperplate-ThirtyTwoBC	ABCDEF abcdefg 0123456789 &?!.e
Coronet-Regular	ABCDEF abcdefg 0123456789 &?!.e
Courier	ABCDEF abcdefg 0123456789 &?!.e
Courier-Bold	ABCDEF abcdefg 0123456789 &?!.e
Courier-BoldOblique	ABCDEF abcdefg 0123456789 &?!.e
Courier-Oblique	ABCDEF abcdefg 0123456789 &?!.e
Eurostile	ABCDEF abcdefg 0123456789 &?!.e
Eurostile-Bold	ABCDEF abcdefg 0123456789 &?!.e
Eurostile-BoldExtendedTwo	ABCDEF abcdefg 0123456789 &?!.e
Eurostile-ExtendedTwo	ABCDEF abcdefg 0123456789 &?!.e
Geneva	ABCDEF abcdefg 0123456789 &?!.e
GillSans	ABCDEF abcdefg 0123456789 &?!.e
GillSans-Bold	ABCDEF abcdefg 0123456789 &?!.e
GillSans-BoldCondensed	ABCDEF abcdefg 0123456789 &?!.e
GillSans-BoldItalic	ABCDEF abcdefg 0123456789 &?!.e
GillSans-Condensed	ABCDEF abcdefg 0123456789 &?!.e
GillSans-ExtraBold	ABCDEF abcdefg 0123456789 &?!.e
GillSans-Italic	ABCDEF abcdefg 0123456789 &?!.e
GillSans-Light	ABCDEF abcdefg 0123456789 &?!.e
GillSans-LightItalic	ABCDEF abcdefg 0123456789 &?!.e
Goudy	ABCDEF abcdefg 0123456789 &?!.e
Goudy-Bold	ABCDEF abcdefg 0123456789 &?!.e
Goudy-BoldItalic	ABCDEF abcdefg 0123456789 &?!.e
Goudy-ExtraBold	ABCDEF abcdefg 0123456789 &?!.e
Goudy-Italic	ABCDEF abcdefg 0123456789 &?!.e
GreekMono737	ABCDEF abcdefg 0123456789 &?!.e
GreekMono737-Bold	ABCDEF abcdefg 0123456789 &?!.e
GreekMono737-BoldItalic	ABCDEF abcdefg 0123456789 &?!.e
GreekMono737-Italic	ABCDEF abcdefg 0123456789 &?!.e
GreekMono851	ABCDEF abcdefg 0123456789 &?!.e
GreekMono851-Bold	ABCDEF abcdefg 0123456789 &?!.e
GreekMono851-BoldItalic	ABCDEF abcdefg 0123456789 &?!.e
GreekMono851-Italic	ABCDEF abcdefg 0123456789 &?!.e
GreekMono8859-7	ABCDEF abcdefg 0123456789 &?!.e
GreekMono8859-7Bold	ABCDEF abcdefg 0123456789 &?!.e

Internal Fonts (continued):

GreekMono8859-7BoldItalic
 GreekMono8859-7Italic
 GreekSans737
 GreekSans737-Bold
 GreekSans737-BoldItalic
 GreekSans737-Italic
 GreekSans851
 GreekSans851-Bold
 GreekSans851-BoldItalic
 GreekSans851-Italic
 GreekSans8859-7
 GreekSans8859-7Bold
 GreekSans8859-7BoldItalic
 GreekSans8859-7Italic
 GreekSerif737
 GreekSerif737-Bold
 GreekSerif737-BoldItalic
 GreekSerif737-Italic
 GreekSerif851
 GreekSerif851-Bold
 GreekSerif851-BoldItalic
 GreekSerif851-Italic
 GreekSerif8859-7
 GreekSerif8859-7Bold
 GreekSerif8859-7BoldItalic
 GreekSerif8859-7Italic
 Helvetica
 Helvetica-Bold
 Helvetica-BoldOblique
 Helvetica-Condensed
 Helvetica-Condensed-Bold
 Helvetica-Condensed-BoldOblique
 Helvetica-Condensed-Oblique
 Helvetica-Narrow
 Helvetica-Narrow-Bold
 Helvetica-Narrow-BoldOblique
 Helvetica-Narrow-Oblique
 Helvetica-Oblique
 HoeflerText-Black
 HoeflerText-BlackItalic
 HoeflerText-Italic
 HoeflerText-Ornaments
 HoeflerText-Regular
 JoannaMT
 JoannaMT-Bold
 JoannaMT-BoldItalic
 JoannaMT-Italic
 LetterGothic
 LetterGothic-Bold
 LetterGothic-BoldSlanted
 LetterGothic-Slanted
 LubalinGraph-Book
 LubalinGraph-BookOblique
 LubalinGraph-Demi
 LubalinGraph-DemiOblique
 Marigold
 MonaLisa-Recut
 Monaco
 NewCenturySchlbk-Bold
 NewCenturySchlbk-BoldItalic
 NewCenturySchlbk-Italic
 NewCenturySchlbk-Roman
 NewYork
 Optima
 Optima-Bold
 Optima-BoldItalic
 Optima-Italic
 Oxford
 Palatino-Bold

PostScript Font Listing

Internal Fonts (continued):

Palatino-BoldItalic	ABCDEF abcd ef 0123456789 &? !\$.€
Palatino-Italic	ABCDEF abcd ef 0123456789 &? !\$.€
Palatino-Roman	ABCDEF abcd ef 0123456789 &? !\$.€
StempelGaramond-Bold	ABCDEF abcd ef 0123456789 &? !\$.€
StempelGaramond-BoldItalic	ABCDEF abcd ef 0123456789 &? !\$.€
StempelGaramond-Italic	ABCDEF abcd ef 0123456789 &? !\$.€
StempelGaramond-Roman	ABCDEF abcd ef 0123456789 &? !\$.€
Symbol	ABXΔEΘF αβγδεϕζ 0123456789 &? !\$.€
Tekton	ABCDEF abcd ef 0123456789 &? !\$.€
Times-Bold	ABCDEF abcd ef 0123456789 &? !\$.€
Times-BoldItalic	ABCDEF abcd ef 0123456789 &? !\$.€
Times-Italic	ABCDEF abcd ef 0123456789 &? !\$.€
Times-Roman	ABCDEF abcd ef 0123456789 &? !\$.€
TimesNewRomanPS-BoldItalicMT	ABCDEF abcd ef 0123456789 &? !\$.€
TimesNewRomanPS-BoldMT	ABCDEF abcd ef 0123456789 &? !\$.€
TimesNewRomanPS-ItalicMT	ABCDEF abcd ef 0123456789 &? !\$.€
TimesNewRomanPSMT	ABCDEF abcd ef 0123456789 &? !\$.€
Univers	ABCDEF abcd ef 0123456789 &? !\$.€
Univers-Bold	ABCDEF abcd ef 0123456789 &? !\$.€
Univers-BoldExt	ABCDEF abcd ef 0123456789 &? !\$.€
Univers-BoldExtObli	ABCDEF abcd ef 0123456789 &? !\$.€
Univers-BoldOblique	ABCDEF abcd ef 0123456789 &? !\$.€
Univers-Condensed	ABCDEF abcd ef 0123456789 &? !\$.€
Univers-CondensedBold	ABCDEF abcd ef 0123456789 &? !\$.€
Univers-CondensedBoldOblique	ABCDEF abcd ef 0123456789 &? !\$.€
Univers-CondensedOblique	ABCDEF abcd ef 0123456789 &? !\$.€
Univers-Extended	ABCDEF abcd ef 0123456789 &? !\$.€
Univers-ExtendedObli	ABCDEF abcd ef 0123456789 &? !\$.€
Univers-Light	ABCDEF abcd ef 0123456789 &? !\$.€
Univers-LightOblique	ABCDEF abcd ef 0123456789 &? !\$.€
Univers-Oblique	ABCDEF abcd ef 0123456789 &? !\$.€
Wingdings	À Á Â Ã Ä Å Æ Ç È É Ê Ë Ì Í Î Ï Ñ Ò Ó Ô Õ Ö × Ø Ù Ú Û Ü Ý Þ ß à á â ã
Wingdings-Regular	À Á Â Ã Ä Å Æ Ç È É Ê Ë Ì Í Î Ï Ñ Ò Ó Ô Õ Ö × Ø Ù Ú Û Ü Ý Þ ß à á â ã
ZapfChancery-MediumItalic	À Á Â Ã Ä Å Æ Ç È É Ê Ë Ì Í Î Ï Ñ Ò Ó Ô Õ Ö × Ø Ù Ú Û Ü Ý Þ ß à á â ã
ZapfDingbats	À Á Â Ã Ä Å Æ Ç È É Ê Ë Ì Í Î Ï Ñ Ò Ó Ô Õ Ö × Ø Ù Ú Û Ü Ý Þ ß à á â ã

Resident Fonts

Position	Font Name	Print Sample
1	Courier «Esc»(Symbol set«Esc»(s0p=pitch»h0s0b4099T	'ABCDEFGFGabcdefg0123456789&?!.,'
2	CG Times «Esc»(Symbol set«Esc»(s1p=px=12»v0s0b4101T	'ABCDEFGFGabcdefg0123456789&?!.,'
3	CG Times Bold «Esc»(Symbol set«Esc»(s1p=px=12»v0s3b4101T	'ABCDEFGFGabcdefg0123456789&?!.,'
4	CG Times Italic «Esc»(Symbol set«Esc»(s1p=px=12»v1s0b4101T	'ABCDEFGFGabcdefg0123456789&?!.,'
5	CG Times Bold Italic «Esc»(Symbol set«Esc»(s1p=px=12»v1s3b4101T	'ABCDEFGFGabcdefg0123456789&?!.,'
6	CG Omega «Esc»(Symbol set«Esc»(s1p=px=12»v0s0b4113T	'ABCDEFGFGabcdefg0123456789&?!.,'
7	CG Omega Bold «Esc»(Symbol set«Esc»(s1p=px=12»v0s3b4113T	'ABCDEFGFGabcdefg0123456789&?!.,'
8	CG Omega Italic «Esc»(Symbol set«Esc»(s1p=px=12»v1s0b4113T	'ABCDEFGFGabcdefg0123456789&?!.,'
9	CG Omega Bold Italic «Esc»(Symbol set«Esc»(s1p=px=12»v1s3b4113T	'ABCDEFGFGabcdefg0123456789&?!.,'
10	Coronet «Esc»(Symbol set«Esc»(s1p=px=12»v1s0b4116T	'ABCDEFGFGabcdefg0123456789&?!.,'
11	Clarendon Condensed «Esc»(Symbol set«Esc»(s1p=px=12»v4s3b4140T	'ABCDEFGFGabcdefg0123456789&?!.,'
12	Univers Medium «Esc»(Symbol set«Esc»(s1p=px=12»v0s0b4148T	'ABCDEFGFGabcdefg0123456789&?!.,'
13	Univers Bold «Esc»(Symbol set«Esc»(s1p=px=12»v0s3b4148T	'ABCDEFGFGabcdefg0123456789&?!.,'
14	Univers Medium Italic «Esc»(Symbol set«Esc»(s1p=px=12»v1s0b4148T	'ABCDEFGFGabcdefg0123456789&?!.,'
15	Univers Bold Italic «Esc»(Symbol set«Esc»(s1p=px=12»v1s3b4148T	'ABCDEFGFGabcdefg0123456789&?!.,'
16	Univers Medium Condensed «Esc»(Symbol set«Esc»(s1p=px=12»v4s0b4148T	'ABCDEFGFGabcdefg0123456789&?!.,'
17	Univers Bold Condensed «Esc»(Symbol set«Esc»(s1p=px=12»v4s3b4148T	'ABCDEFGFGabcdefg0123456789&?!.,'
18	Univers Medium Condensed Italic «Esc»(Symbol set«Esc»(s1p=px=12»v5s0b4148T	'ABCDEFGFGabcdefg0123456789&?!.,'

Resident Fonts

Position	Font Name	Print Sample
19	Univers Bold Condensed Italic «Esc»(Symbol set«Esc»(s1p«size»v5s3b4148T	'ABCDEFGabcdefg0123456789&?!.,'
20	Antique Olive «Esc»(Symbol set«Esc»(s1p«size»v0s0b4168T	'ABCDEFGabcdefg0123456789&?!.,'
21	Antique Olive Bold «Esc»(Symbol set«Esc»(s1p«size»v0s3b4168T	'ABCDEFGabcdefg0123456789&?!.,'
22	Antique Olive Italic «Esc»(Symbol set«Esc»(s1p«size»v1s0b4168T	'ABCDEFGabcdefg0123456789&?!.,'
23	Garamond Antiqua «Esc»(Symbol set«Esc»(s1p«size»v0s0b4197T	'ABCDEFGabcdefg0123456789&?!.,'
24	Garamond Halbfett «Esc»(Symbol set«Esc»(s1p«size»v0s3b4197T	'ABCDEFGabcdefg0123456789&?!.,'
25	Garamond Kursiv «Esc»(Symbol set«Esc»(s1p«size»v1s0b4197T	'ABCDEFGabcdefg0123456789&?!.,'
26	Garamond Kursiv Halbfett «Esc»(Symbol set«Esc»(s1p«size»v1s3b4197T	'ABCDEFGabcdefg0123456789&?!.,'
27	Marigold «Esc»(Symbol set«Esc»(s1p«size»v0s0b4297T	'ABCDEFGabcdefg0123456789&?!.,'
28	Albertus Medium «Esc»(Symbol set«Esc»(s1p«size»v0s1b4362T	'ABCDEFGabcdefg0123456789&?!.,'
29	Albertus Extra Bold «Esc»(Symbol set«Esc»(s1p«size»v0s4b4362T	'ABCDEFGabcdefg0123456789&?!.,'
30	Ryadh «Esc»(Symbol set«Esc»(s1p«size»v0s0b4859T	ABCDEFGabcdefg0123456789&?!.,'
31	Ryadh Bold «Esc»(Symbol set«Esc»(s1p«size»v0s3b4859T	ABCDEFGabcdefg0123456789&?!.,'
32	Malka «Esc»(Symbol set«Esc»(s1p«size»v0s0b16584T	ABCDEFGabcdefg0123456789&?!.,'
33	Malka Bold «Esc»(Symbol set«Esc»(s1p«size»v0s3b16584T	ABCDEFGabcdefg0123456789&?!.,'
34	Malka Italic «Esc»(Symbol set«Esc»(s1p«size»v1s0b16584T	ABCDEFGabcdefg0123456789&?!.,'
35	Dorit «Esc»(Symbol set«Esc»(s1p«size»v0s0b16585T	ABCDEFGabcdefg0123456789&?!.,'
36	Dorit Bold «Esc»(Symbol set«Esc»(s1p«size»v0s3b16585T	ABCDEFGabcdefg0123456789&?!.,'

Resident Fonts

Position	Font Name	Print Sample
37	Naamit «Esc»(Symbol set«Esc»(s1p«size»v0s0b16587T	ABCDEFGabcdefg0123456789&?!.,'
38	Naamit Bold «Esc»(Symbol set«Esc»(s1p«size»v0s3b16587T	ABCDEFGabcdefg0123456789&?!.,'
39	MT 181 «Esc»(Symbol set«Esc»(s1p«size»v0s0b16602T	ABCDEFGabcdefg0123456789&?!.,'
40	Arial Bold «Esc»(Symbol set«Esc»(s1p«size»v0s3b16602T	ABCDEFGabcdefg0123456789&?!.,'
41	Arial Italic «Esc»(Symbol set«Esc»(s1p«size»v1s0b16602T	ABCDEFGabcdefg0123456789&?!.,'
42	Arial Bold Italic «Esc»(Symbol set«Esc»(s1p«size»v1s3b16602T	ABCDEFGabcdefg0123456789&?!.,'
43	Times New Roman «Esc»(Symbol set«Esc»(s1p«size»v0s0b16901T	ABCDEFGabcdefg0123456789&?!.,'
44	Times New Roman Bold «Esc»(Symbol set«Esc»(s1p«size»v0s3b16901T	ABCDEFGabcdefg0123456789&?!.,'
45	Times New Roman Italic «Esc»(Symbol set«Esc»(s1p«size»v1s0b16901T	ABCDEFGabcdefg0123456789&?!.,'
46	Times New Roman Bold Italic «Esc»(Symbol set«Esc»(s1p«size»v1s3b16901T	ABCDEFGabcdefg0123456789&?!.,'
47	Helvetica «Esc»(Symbol set«Esc»(s1p«size»v0s0b24580T	ABCDEFGabcdefg0123456789&?!.,'
48	Helvetica Bold «Esc»(Symbol set«Esc»(s1p«size»v0s3b24580T	ABCDEFGabcdefg0123456789&?!.,'
49	Helvetica Oblique «Esc»(Symbol set«Esc»(s1p«size»v1s0b24580T	ABCDEFGabcdefg0123456789&?!.,'
50	Helvetica Bold Oblique «Esc»(Symbol set«Esc»(s1p«size»v1s3b24580T	ABCDEFGabcdefg0123456789&?!.,'
51	Helvetica Narrow «Esc»(Symbol set«Esc»(s1p«size»v4s0b24580T	ABCDEFGabcdefg0123456789&?!.,'
52	Helvetica Narrow Bold «Esc»(Symbol set«Esc»(s1p«size»v4s3b24580T	ABCDEFGabcdefg0123456789&?!.,'
53	Helvetica Narrow Oblique «Esc»(Symbol set«Esc»(s1p«size»v5s0b24580T	ABCDEFGabcdefg0123456789&?!.,'
54	Helvetica Narrow Bold Oblique «Esc»(Symbol set«Esc»(s1p«size»v5s3b24580T	ABCDEFGabcdefg0123456789&?!.,'

Resident Fonts

Position	Font Name	Print Sample
55	Palatino Roman «Esc»(Symbol set«Esc»(s1p«size»v0s0b24591T	'ABCDEFGHabcdefgh0123456789&?!..'
56	Palatino Bold «Esc»(Symbol set«Esc»(s1p«size»v0s3b24591T	'ABCDEFGHabcdefgh0123456789&?!..'
57	Palatino Italic «Esc»(Symbol set«Esc»(s1p«size»v1s0b24591T	'ABCDEFGHabcdefgh0123456789&?!..'
58	Palatino Bold-Italic «Esc»(Symbol set«Esc»(s1p«size»v1s3b24591T	'ABCDEFGHabcdefgh0123456789&?!..'
59	ITC Avant Garde Book «Esc»(Symbol set«Esc»(s1p«size»v0s0b24607T	'ABCDEFGHabcdefgh0123456789&?!..'
60	ITC Avant Garde DemiBold «Esc»(Symbol set«Esc»(s1p«size»v0s2b24607T	'ABCDEFGHabcdefgh0123456789&?!..'
61	ITC Avant Garde Book Oblique «Esc»(Symbol set«Esc»(s1p«size»v1s0b24607T	'ABCDEFGHabcdefgh0123456789&?!..'
62	ITC Avant Garde DemiBold Oblique «Esc»(Symbol set«Esc»(s1p«size»v1s2b24607T	'ABCDEFGHabcdefgh0123456789&?!..'
63	ITC Bookman Light «Esc»(Symbol set«Esc»(s1p«size»v0s-3b24623T	'ABCDEFGHabcdefgh0123456789&?!..'
64	ITC Bookman DemiBold «Esc»(Symbol set«Esc»(s1p«size»v0s2b24623T	'ABCDEFGHabcdefgh0123456789&?!..'
65	ITC Bookman Light Italic «Esc»(Symbol set«Esc»(s1p«size»v1s-3b24623T	'ABCDEFGHabcdefgh0123456789&?!..'
66	ITC Bookman DemiBold Italic «Esc»(Symbol set«Esc»(s1p«size»v1s2b24623T	'ABCDEFGHabcdefgh0123456789&?!..'
67	New Century Schoolbook Roman «Esc»(Symbol set«Esc»(s1p«size»v0s0b24703T	'ABCDEFGHabcdefgh0123456789&?!..'
68	New Century Schoolbook Bold «Esc»(Symbol set«Esc»(s1p«size»v0s3b24703T	'ABCDEFGHabcdefgh0123456789&?!..'
69	New Century Schoolbook Italic «Esc»(Symbol set«Esc»(s1p«size»v1s0b24703T	'ABCDEFGHabcdefgh0123456789&?!..'
70	New Century Schoolbook Bold Ital «Esc»(Symbol set«Esc»(s1p«size»v1s3b24703T	'ABCDEFGHabcdefgh0123456789&?!..'
71	Times Roman «Esc»(Symbol set«Esc»(s1p«size»v0s0b25093T	'ABCDEFGHabcdefgh0123456789&?!..'
72	Times Roman Bold «Esc»(Symbol set«Esc»(s1p«size»v0s3b25093T	'ABCDEFGHabcdefgh0123456789&?!..'

Position	Font Name	Print Sample
73	Times Roman Italic «Esc»(Symbol set«Esc»(s1p«size»v1s0b25093T	'ABCDEFGabcdefg0123456789&?!..'
74	Times Bold Italic «Esc»(Symbol set«Esc»(s1p«size»v1s3b25093T	'ABCDEFGabcdefg0123456789&?!..'
75	Zapf Chancery Medium Italic «Esc»(Symbol set«Esc»(s1p«size»v1s0b45099T	'ABCDEFGabcdefg0123456789&?!..'
76	Symbol «Esc»(19H«Esc»(s1p«size»v0s0b16686T	(αβγδεζηθικλμνοπρστυωξψζθς)
77	Symbol PS «Esc»(19H«Esc»(s1p«size»v0s0b45358T	(αβγδεζηθικλμνοπρστυωξψζθς)
78	Wingdings «Esc»(579L«Esc»(s1p«size»v0s0b31402T	♠ ♡ ♦ ⬆ ✓ ☑ ☐ ☒ ☓ ☆ ○ ✕ ⊗ ☹ ☺ ☻ ☼
79	Zapf Dingbats «Esc»(14L«Esc»(s1p«size»v0s0b45101T	✧ † ‡ ◊ ‣ * ** *
80	Courier Bold «Esc»(Symbol set«Esc»(s0p«pitch»h0s3b4099T	'ABCDEFGabcdefg0123456789&?!..'
81	Courier Italic «Esc»(Symbol set«Esc»(s0p«pitch»h1s0b4099T	'ABCDEFGabcdefg0123456789&?!..'
82	Courier Bold Italic «Esc»(Symbol set«Esc»(s0p«pitch»h1s3b4099T	'ABCDEFGabcdefg0123456789&?!..'
83	Letter Gothic «Esc»(Symbol set«Esc»(s0p«pitch»h0s0b4102T	'ABCDEFGabcdefg0123456789&?!..'
84	Letter Gothic Bold «Esc»(Symbol set«Esc»(s0p«pitch»h0s3b4102T	'ABCDEFGabcdefg0123456789&?!..'
85	Letter Gothic Italic «Esc»(Symbol set«Esc»(s0p«pitch»h1s0b4102T	'ABCDEFGabcdefg0123456789&?!..'
86	Naskh «Esc»(Symbol set«Esc»(s0p«pitch»h0s0b4124T	ABCDEFGabcdefg0123456789&?!..'
87	Naskh Bold «Esc»(Symbol set«Esc»(s0p«pitch»h0s3b4124T	ABCDEFGabcdefg0123456789&?!..'
88	Koufi «Esc»(Symbol set«Esc»(s0p«pitch»h0s0b4264T	ABCDEFGabcdefg0123456789&?!..'
89	Koufi Bold «Esc»(Symbol set«Esc»(s0p«pitch»h0s3b4264T	ABCDEFGabcdefg0123456789&?!..'
90	Courier PS «Esc»(Symbol set«Esc»(s0p«pitch»h0s0b24579T	'ABCDEFGabcdefg0123456789&?!..'

Resident Fonts

Position	Font Name	Print Sample
91	Courier PS Bold «Esc»(Symbol set«Esc»(sOp«pitch»h0s3b24579T	'ABCDEFGHabcdefgh0123456789&?!.,'
92	Courier PS Oblique «Esc»(Symbol set«Esc»(sOp«pitch»h1s0b24579T	'ABCDEFGHabcdefgh0123456789&?!.,'
93	Courier PS Bold Oblique «Esc»(Symbol set«Esc»(sOp«pitch»h1s3b24579T	'ABCDEFGHabcdefgh0123456789&?!.,'
94	Line Printer «Esc»(BU«Esc»(sOp16.67h8.48v0s0b0T	'ABCDEFGHabcdefgh0123456789&?!.,'

Save Big With Our Spring Sale

BOOST YOUR FLOWER POWER

April showers bring
May flowers—so get
yours blooming
today with 20%
off perennials
and annuals,
now through
June 1.



GET DIGGING...

... and weeding and clipping with
new garden tools and accessories.
We've got great deals on super-
sharp shears, shiny spades and
shovels, and gloves and clogs
to boot. But why stop there?
Don't forget to visit our
showroom of garden accents
featuring bird baths, windchimes,
gazing balls, even benches. You
won't want to go back indoors!



PLANT FOR WINGED WILDLIFE

Did you know that certain plants
attract hummingbirds,
butterflies, bluebirds
and other winged species?

Talk to our experts about how to
create a haven for these delicate
beauties. You'll be amazed by the
colorful new visitors who will come to
sample the pollen and alight on soft
flower petals.



ALPINE RIDGE
GARDEN  **CENTERS**

info@alpinegardencenter.com

THE ALPINE RIDGE APPROACH TO GARDENING

We're about sustainable gardening, embracing
growth without the use of chemicals. Our organic
compost replenishes the soil with natural nutrients.
We have plants that will help keep pesky insects
away, without the need for pesticides. Even our
containers are made of recycled paper products
that will nurture your plants. It's our pledge to
keep your gardens, lawns and all who visit them
free from pollutants and full of beauty.

NEWSLETTER SIGN-UP

Sign up today for gardening
tips and member discounts
delivered to your email.



xerox™

Printed on a Xerox® AltaLink® C8100 Series Color
Multifunction Printer. © 2019 Xerox Corporation. All rights
reserved. Xerox® and AltaLink® are trademarks of Xerox
Corporation in the United States and in other countries.
BR27311 AC8PS 03UA

Billing Summary

System Information

Machine Name:	Name	Software Versions	
Machine Serial Number:	3775791038	Device Software:	123.009.005.33810
Power On Impressions:	26	Patch Version:	None
		Network Controller:	123.009.33810
		UI Panel Firmware:	003.005.00000
		Marking Engine:	030.046.000
		Document Feeder:	023.026.000
		Finisher:	000.000.000
		Fax:	003.022.007
		Scanner:	016.025.005

Billing Meters

Fax		Plain Paper:	3858
Embedded Fax Images Sent:	1438	Transparency:	17
Embedded Fax Impressions:	3862	Envelope:	3

Copy

Black Copied Impressions:	952
Color Copied Impressions:	982

Print

Black Printed Impressions:	11765
Color Printed Impressions:	8739

Scan

Network Scanning Images Sent:	321
E-mail Images Sent:	102

Device Totals

Black Impressions:	16775
Color Impressions:	9717
Total Impressions:	26492

Supplies Usage

Supplies ordering information is located at www.xerox.com/office/supplies

Consumables

1-Toner Cartridges



Black

Date Installed: Nov 13, 2025
Reorder: 006R01742
Estimated Pages Remaining: 34000
(Based upon this toner cartridge's average coverage: 2%)

Life Remaining

100%
50%
0%

Cyan

Date Installed: Nov 8, 2025
Reorder: 006R01743
Estimated Pages Remaining: 30000
(Based upon this toner cartridge's average coverage: 2%)

Life Remaining

100%
50%
0%

Magenta

Date Installed: May 12, 2025
Reorder: 006R01744
Estimated Pages Remaining: 2000
(Based upon this toner cartridge's average coverage: 0%)

Life Remaining

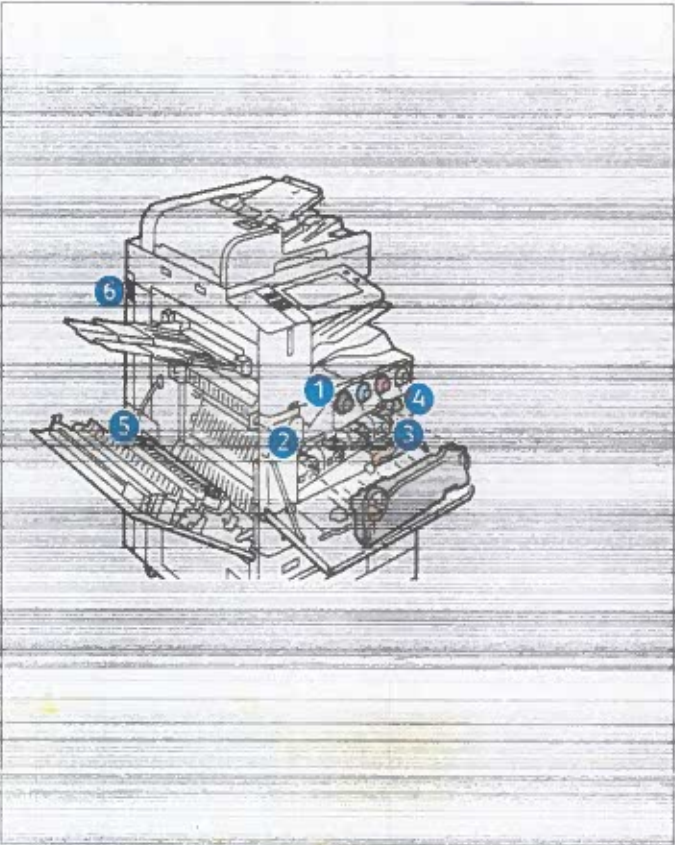
100%
50%
0%

Yellow

Date Installed: Mar 21, 2025
Reorder: 006R01745
Estimated Pages Remaining: 2000
(Based upon this toner cartridge's average coverage: 1%)

Life Remaining

100%
50%
0%



Routine Maintenance Items

2 Drum Cartridge



Black (R1)

Date Installed: Aug 28, 2024
Reorder: 013R00681
Estimated Pages Remaining: 136000
(Based on average printer job size: 1 Pages)

Life Remaining

100%
50%
0%

Cyan (R2)

Date Installed: Aug 28, 2024
Reorder: 013R00681
Estimated Pages Remaining: 144500
(Based on average printer job size: 1 Pages)

Life Remaining

100%
50%
0%

Magenta (R3)

Date Installed: Aug 28, 2024
Reorder: 013R00681
Estimated Pages Remaining: 144500
(Based on average printer job size: 1 Pages)

Life Remaining

100%
50%
0%

Yellow (R4)

Date Installed: Nov 26, 2024
Reorder: 013R00681
Estimated Pages Remaining: 139000
(Based on average printer job size: 1 Pages)

Life Remaining

100%
50%
0%

3 Waste Container



Date Installed: Aug 27, 2025
Reorder: 008R08101

OK

4 Transfer Belt Cleaner

Date Installed: Aug 27, 2025
Reorder: 001R00623
Estimated Pages Remaining: 130000

Life Remaining

100%
50%
0%

5 Second Bias Transfer Roller

Date Installed: Aug 27, 2025
Reorder: 008R08103
Estimated Pages Remaining: 80500

Life Remaining

100%
50%
0%

Common User Data

Machine Name:	Name
IPv4 Address:	10.61.15.33
Machine Serial Number:	3775791038
Fax Line1	3333
Machine URL:	https://10.61.15.33
Machine Activation Date:	Aug 27, 2025 00:51:18
Black Impressions:	16775
Color Impressions:	9719
Total Impressions:	26494

Machine Profile

Xerox Asset Tag:	0123456789
Customer Asset Tag:	
Service Phone Number:	
Customer Support Number:	
Supplier Phone Number:	
Recycling Phone Number:	
System Administrator:	Not set
Machine Location:	Name
Managed By:	
Primary MB Server:	

Machine Hardware

Fax Card:	Embedded: 2 Lines
Fax Memory Size:	955 MB
Foreign Interface Card:	not present
Device RAM Size:	4096 MB
Device Storage Size:	used=3233MB/total=128035MB (SSD)
EPF Memory Size:	900 MB
Finisher Type:	Offsetting Catch Tray
Finisher Punch:	None
Finisher Folder:	not present
Multi-feed Detection Kit:	Not Installed

General Setup

Remote Services:	Enabled
Remote Software Download:	Enabled
Remote Services Trans. Time:	10:59
Xerox Workplace Cloud:	Enabled
E-mail Alerts:	Enabled
Service Plan:	Metered
Billing Impression Mode:	A4 Impressions
Geographic Region:	unknown
Startup Config Report:	Enabled
GMT Offset:	+05:30
Cloning Installation:	Allowed (Encrypted Files Only)
Allow Print Submission of Client Files:	Enabled
File Sharing:	Enabled
IBIG2:	Lossless
Energy Saver	
Deep Sleep:	Enabled
Energy Saver Mode:	Job Activated
Sleep Mode Timer:	0 minutes
Auto-Off:	Disabled
Smart Proximity Sensor	
Wake on Arrival:	Enabled
Sleep on Departure:	Disabled
Maximize Detection Range:	Disabled

Software Versions

Device Software:	123.009.005.33810
Patch Version:	None
Network Controller:	123.009.33810
UI Panel Firmware:	003.005.00000
User Interface:	123.009.33810
Marking Engine:	030.046.000
Copy Controller:	123.009.33810
Document Feeder:	023.026.000
Finisher:	000.000.000
Fax:	003.022.007
OS:	123.005.33810
Scanner:	016.025.005
Software Upgrade:	123.009.33810
Machine Upgrades:	Allowed
Last Successful Upgrade:	December 8, 2025 16:49:02
Scheduled Auto Upgrades:	Enabled
Auto Upgrade Start Time:	Daily
Auto Upgrade Server:	10.61.23.93:21

Media Trays

Tray 1:	Transparency, Clear and Letter (8.5 x 11")
Tray 2:	Transparency, Clear and A4 (210 x 297 mm)
Tray 3:	Plain, White and A4 (210 x 297 mm)
Tray 4:	Plain, White and A4 (210 x 297 mm)
Bypass Tray:	Plain, White and Letter (8.5 x 11")

Connectivity

Mobile Workflows

AirPrint Printing:	Disabled
Mopria Printing:	Disabled
AirPrint / Mopria Scanning:	Enabled
Authentication Required:	Disabled
Universal Print:	Disabled
Universal Print Registration Status:	Not Registered

Physical Connections

USB Settings:	
USB Type A Ports:	All Enabled/Restricted
USB Type B Port:	Enabled
Connection Timeout:	5 seconds
Wired:	Enabled
Ethernet MAC Address:	98:93:46-98:93:47
Ethernet Speed/Duplex Setting:	auto
Wireless:	Disabled
Wireless MAC Address:	
Network Name (SSID):	
BSSID:	
Security Mode:	
Encryption Algorithm:	
Status:	
Wi-Fi Direct:	Enabled
Wireless Hardware:	Not Installed
Wi-Fi Protected Setup® (WPS) Name:	
Connection Method:	
Subnet Prefix Address:	
Access Point (SSID):	
Show Password on Device Touch Screen:	
NFC:	Enabled
iBeacon (Bluetooth®) for AirPrint DL:	Enabled
iBeacon Hardware:	Not Installed
Bluetooth Device Address:	
iBeacon IP Address:	

Protocols

TCP/IPv4:	Enabled
IPv4 Address:	10.61.15.33
Subnet Mask:	255.255.255.0
Router/Gateway:	10.61.15.1
Automatic Addressing:	DHCP
DHCP Server:	10.61.15.224
DHCP Lease Expiration:	Mon Dec 15 19:24:55 2025
BOOTP Broadcast:	Disabled
Self Assigned Address State:	Enabled
Self Assigned Address:	10.61.15.33
TCP/IPv6:	Disabled
Link Local Address:	
Use Router Supplied Prefix:	
Stateless Global Address 1:	
Stateless Global Address 2:	
Manual Address:	
DHCP Addressing:	
DHCP Address:	
Default Gateway:	
DUID (DHCP Unique Identifier):	
DNS Settings:	
Requested Host Name:	XR9C934E9E0F17
Verified Host Name:	
Requested Domain Name:	
Verified Domain Name:	
Multicast DNS:	Enabled
Release DHCP Leases and DNS Registrati...	Disabled
Primary DNS Server:	10.61.7.16
Alternate DNS Server 1:	10.61.10.6
Alternate DNS Server 2:	10.61.7.15
DNS Connection Timeout:	5
Append Device Domain:	Enabled
Append Parent Domains:	Disabled
DNS Domain Search List:	XEROXQA.COM.
Prefer IPv6 DNS over IPv4:	Enabled

Installed Options

PS:	Installed
-----	-----------

Protocols (cont.)

Bonjour:	
Bonjour Printer Name:	Name
HTTP:	Enabled
Port Number:	80
Force Traffic over Secure Connection (H...):	Yes
Secure HTTP Port Number:	443
Proxy Server:	Manual
Proxy Server Address:	10.177.8.91.8080
IPP:	Disabled
Secure IPP Mode:	IPP and Secure IPPS
IPP Network Path:	http://10.61.15.33:631
SNMP:	
SNMP v1/v2:	Enabled
SNMP v3:	Enabled
LPR/LPD:	Enabled
Port Number:	515
PDL Switching:	Disabled
PDL Banner Override:	Disabled
Raw IP Printing:	Enabled
Port Number:	9100
Bidirectional:	Disabled
End of Job Timeout:	300
PDL Switching:	Disabled
LDAP:	
LDAP Server 1 Friendly Name:	Testt
LDAP Server 1 Primary LDAP Address:	10.61.23.93.389
LDAP Server 1 Alternate LDAP Address:	0.0.0.0:389
LDAP Server 1 Search Directory Root:	cn=users,dc=ts13,dc=com
LDAP Server 1 Secure Connection (LDA...):	Disabled
LDAP Server 1 Validate Server Certificate:	Disabled
SMTP:	
SMTP Server:	10.61.23.93.25
Connect Encryption (TLS):	No Encryption
Validate Server Certificate (TLS):	
Max Message Size (KB):	10240
Number of Fragments:	1
Total Job Size (KB):	300000
Job Splitting Boundary:	Page Boundary
Credentials for Auto E-mails:	None
Credentials for Walkup User:	None
SMTP Authentication Type:	Basic Auth with SMTP
POP3:	
POP3 Server:	0.0.0.0:110
POP3 Secure Connection (TLS):	Disabled
POP3 Validate Server Certificate:	
E-mail Address:	
Receipt of E-mail via POP3:	Disabled
Send Confirmation Request:	Enabled
Accepting E-mail over client:	Enabled
NTF:	
Primary Server:	[2403:0:22b:4a14d:35b3:33b:477a]:127
Alternate Server:	[2403:0:22b:4a14d:35b3:33b:477a]:127
SLP:	
SLP Client:	Disabled
FTP Client:	Enabled
FTP Client Mode:	Passive
Web Services on Device:	
WS-Discovery:	Enabled
WS-Discovery Multicast:	Enabled
WS-Print:	Enabled
WS-Scan:	Enabled
Web Services:	
Copy Submission:	Enabled
Digital Certificate Management and Secur...:	Enabled
Extensible Service Registration:	Enabled
Job Limits:	Enabled
Job Management Extension:	Enabled
Device Configuration:	Enabled
Scan Submission:	Enabled
Scan Workflow Management:	Enabled
Session Data:	Enabled
User Interface Configuration:	Enabled
EIP Proxy Configuration:	Enabled
Xerox Secure Access:	Disabled
EIP SNMP Configuration:	Enabled
Print Submission:	Enabled
Scan Template Mgmt:	Enabled
Mass Storage Access:	Enabled
Card Reader Access:	Enabled
Authentication & Accounting Configur...:	Enabled
Export Audit Log:	Enabled
Trellix Embedded Control:	Enabled

Apps

Printing

Banner Sheet:	Enabled
Sys/Start Job:	Enabled
Delete Held Jobs After:	0 Minute(s)
Error Sheets:	Enabled
Paper Substitution:	Enabled
Tray Priority:	1,2,3,4,5
Default Copies:	1
Default Job Type:	Normal Print
Default Paper Size:	x=210mm, y=297mm
Default Paper Color:	White
Default 2 Sided Printing:	2 Sided
Default Output Tray:	Output Catch Tray
Default Output Color:	Color
Default Collated Sets:	Enabled
Default Stapling:	Not Available
Offsetting Between Jobs:	No Offset Between Jobs
PostScript	Installed
Level:	3
Version:	3021.101
Image Quality:	Standard

PCL

Version:	6
Pitch Size:	10.00
Point Size:	12.00
Font Name:	Courier
Lines Per Page:	64
Custom Color Tables	Enabled
Label:	Not Installed

Fax:

Fax Line1:	Enabled/Displayed
Fax Line2:	3333

Server Fax:

Confirmation Sheet:	Enabled
Delay Start:	Errors Only
Repository Protocol:	Disabled
Repository Server:	FTP
Repository Document Path:	10.61.23.93.21

Workflow Scanning:

Confirmation Sheet:	Enabled
Default Repository Protocol:	Off
Default Repository Server:	FTP
Default Repository Document Path:	10.61.23.93.21
Default Repository Login Credentials:	ark
Alt1 Repository Protocol:	Device
Alt1 Repository Server:	SMB
Alt1 Repository Document Path:	0.0.0.445
Alt1 Repository Login Credentials:	Device
Workflow Pool Protocol:	SMB
Workflow Pool Server:	0.0.0.0
Workflow Pool Path:	

Email:

Default From Address:	Enabled
Confirmation Sheet:	smart@ts13.com
Auto Send to Self:	Off
E-mail Security:	Disabled

Scan to Mailbox:

View Mailboxes by Default:	Enabled
Storage Capacity (MB):	23443 MB
Storage Used (MB):	1224 MB
Cleanup of Public Folders:	Enabled
Cleanup of Created Folders:	Enabled
Cleanup Time:	Daily

Scan to Home:

Friendly Name:	Enabled
Workflow Name:	Template1
Auto Create Subdir:	Workflow
Append User Name to Path:	Disabled
Auto Create User Name Dir:	Disabled

Scan To:

Cloud Services:	Enabled
Print From:	Disabled
Saved Jobs for Reprint:	Enabled
Print From USB:	Enabled
Print From MailBox:	Disabled
Cloud Services:	Enabled

Accounting

Accounting Mode: None
Network Accounting: Disabled

Security

Authentication Configuration

Machine UI Authentication: Locally on the Device
Home: Unlocked
Jobs: Unlocked
Device: Unlocked
Device Website Authentication: Locally on the Device
Authorization: Locally on the Device
Retrieve E-mail from LDAP: Enabled

Authentication Server:

Kerberos: Kerberos
Kerberos Primary Realm: 0.0.0.0:88
Kerberos Primary Address: 0.0.0.0:88
Kerberos Alt 1 Address: 0.0.0.0:88
SMB NT Domain: 0.0.0.0:443
SMB Alt 1 NT Domain: 0.0.0.0:443
Smartcard Ctrl Server: 0.0.0.0:443
Smartcard Ctrl Domain: 0.0.0.0:443
Smartcard OCSP URL: 0.0.0.0:443
Card Reader Upgrade Policy: Enabled
Card Reader Firmware Version: 0.0.0.0:443

Xerox Secure Access:

Secure Access Server: Disabled
Secure Access Path: 0.0.0.0:443

Audit Log:

Enabled
IP Sec: Disabled

IP Filtering:

Disabled
Security Certificates

Machine Certificate: Signed
Root Certificates Installed: A8

802.1x:

Disabled
Job Data Removal:

Scheduled: Disabled
Scheduled Frequency: 0.0.0.0:443

FIPS 140-3:

Disabled
TLS: TLS 1.2 and TLS 1.3

TLS Hash: SHA-1, SHA-256 and above
Trellix Embedded Control: Enhanced Security

Extensible Service Setup

Third Generation Browser: X3G-3.24.23.2.40.5.011.01.00.00
Widget Version: v1.3.17.08.20140613

Widget Version: v2.5.19.09.20240123

Common User Data

Machine Name:	Name
IPv4 Address:	10.61.15.33
Machine Serial Number	3775791038
Fax Line1:	3333
Machine URL:	https://10.61.15.33
Machine Activation Date:	Aug 27, 2025 00:51:18
Block Impressions:	16775
Color Impressions:	9719
Total Impressions:	26494

Machine Profile

Xerox Asset Tag:	0123456789
Customer Asset Tag:	
Service Phone Number:	
Customer Support Number:	
Supplier Phone Number:	
Recycling Phone Number:	
System Administrator:	Not set
Machine Location:	Name
Managed By:	
Primary MB Server:	

Machine Hardware

Fax Card:	Embedded: 2 Lines
Fax Memory Size:	655 MB
Foreign Interface Card:	not present
Device RAM Size:	4096 MB
Device Storage Size:	used=3233MB/total=128035MB (SSD)
EPF Memory Size:	900 MB
Finisher Type:	Offsetting Catch Tray
Finisher Punch:	None
Finisher Folder:	not present
Multi-feed Detection Kit:	Not Installed

General Setup

Remote Services:	Enabled
Remote Software Download:	Enabled
Remote Services Trans. Time:	10:59
Xerox Workplace Cloud:	Enabled
E-mail Alerts:	Enabled
Service Plan:	Metered
Billing Impression Mode:	All Impressions
Geographic Region:	unknown
GMT Offset:	+05:30
Cloning Installation:	Allowed (Encrypted Files Only)
File Sharing:	Enabled
BIOS2:	Locked

Energy Saver

Deep Sleep:	Enabled
Energy Saver Mode:	Job Activated
Smart Proximity Sensor:	
Wake on Arrival:	Enabled
Sleep on Departure:	Disabled

Software Versions

Device Software:	123.009.005.33810
Patch Version:	None
Network Controller:	123.009.33810
UI Panel Firmware:	003.005.00000
Marking Engine:	030.046.000
Document Feeder:	023.026.000
Finisher:	000.000.000
Fax:	003.022.007
Scanner:	016.025.005
Machine Upgrades:	Allowed
Last Successful Upgrade:	December 8, 2025 16:49:02

Media Trays

Tray 1:	Transparency, Clear and Letter (8.5 x 11")
Tray 2:	Transparency, Clear and A4 (210 x 297 mm)
Tray 3:	Plain, White and A4 (210 x 297 mm)
Tray 4:	Plain, White and A4 (210 x 297 mm)
Bypass Tray:	Plain, White and Letter (8.5 x 11")

Installed Options

PS:	Installed
-----	-----------

Connectivity

Mobile Workflows

AirPrint Printing:	Disabled
Mopria Printing:	Disabled
AirPrint / Mopria Scanning:	Enabled
Authentication Required:	Disabled

Physical Connections

USB Settings

USB Type A Ports:	All Enabled/Restricted
USB Type B Port:	Enabled
Wired:	Enabled
Ethernet MAC Address:	9c:93:4e:9e:0f:17
Ethernet Speed/Duplex Setting:	auto
Wireless:	Disabled

Wireless MAC Address

Network Name (SSID):

BSSID:

Security Mode:

Encryption Algorithm:

Status:

Wi-Fi Direct:	Enabled
Wireless Hardware:	Not Installed

Wi-Fi Protected Setup (WPS) Name:

Access Point (SSID):

Show Password on Device Touch Screen:

NFC:

iBeacon (Bluetooth®) for AirPrint DL

iBeacon Hardware:

Bluetooth Device Address:

iBeacon IP Address:

Protocols

TCP/IP v4:

IPv4 Address:	Enabled
Subnet Mask:	10.61.15.33
Router/Gateway:	255.255.255.0
Automatic Addressing:	10.61.15.1
DHCP Server:	DHCP
DHCP Lease Expiration:	10.61.13.224
BOOTP Broadcast:	Mon Dec 15 19:24:55 2025
Self Assigned Address State:	Disabled
Self Assigned Address:	Enabled

TCP/IP v6:

Link Local Address:	Disabled
Use Router Supplied Prefix:	
Stateless Global Address 1:	
Stateless Global Address 2:	
Manual Address:	
DHCP Addressing:	
DHCP Address:	
Default Gateway:	
QUID (DHCP Unique Identifier):	

DNS Settings:

Requested Host Name:	XR9C934E9E0F17
Verified Host Name:	
Requested Domain Name:	
Verified Domain Name:	
Multicast DNS:	Enabled
Release DHCP Leases and DNS Registrati.	Disabled
Primary DNS Server:	10.61.7.16
Prefer IPv6 DNS over IPv4:	Enabled

Bonjour:

Bonjour Printer Name:	Name
HTTP:	Enabled
Force Traffic over Secure Connection (H.	Yes
IPP:	Disabled

SNMP

SNMP v1/v2:	Enabled
SNMP v3:	Enabled

LPR/LPD:

Raw IP Printing:

LDAP

LDAP Server 1 Primary LDAP Address:	10.61.23.93:389
LDAP Server 1 Search Directory Root:	cn=users,dc=ts13,dc=com
LDAP Server 1 Secure Connection (LDA.	Disabled
LDAP Server 1 Validate Server Certificate:	Disabled

SMTP

SMTP Server:	10.61.23.93:25
Connect Encryption (TLS):	No Encryption
Validate Server Certificate (TLS):	
SMTP Authentication Type:	Basic Auth with SMTP

Protocols (cont.)

POP3	
POP3 Server:	00.0.0.110
POP3 Secure Connection (TLS):	Disabled
POP3 Validate Server Certificate:	
E-mail Address:	
FTP	Disabled
FTP Client:	Enabled
FTP Client Mode:	Passive
Web Services on Device:	Enabled

Apps

Printing

Banner Sheet:	Enabled
Error Sheets:	Enabled
Paper Substitution:	Enabled
Tray Priority:	1,2,3,4,5
PostScript Level:	Installed
Level:	3
Version:	3021.101

PCL

Version:	6
Font Name:	Courier
Custom Color Tables:	Enabled
Label:	Not Installed

Fax:	Enabled/Displayed
Fax Line 1:	3333
Fax Line 2:	

Server Fax:

Repository Protocol:	FTP
Repository Server:	10.61.23.9321
Repository Document Path:	/

Workflow Scanning:

Email:	Enabled
---------------	---------

Scan to Mailbox:

Storage Capacity (MB):	23443 MB
Storage Used (MB):	1224 MB
Cleanup of Public Folders:	Enabled
Cleanup of Created Folders:	Enabled
Cleanup Time:	Daily

Scan to Home:

Scan To:	Enabled
Cloud Services:	Disabled

Print From:

Saved Jobs for Reprint:	Enabled
Print From USB:	Enabled
Print From MailBox:	Disabled
Cloud Services:	Enabled

Accounting

Accounting Mode:	None
Network Accountability:	Disabled

Security

Authentication Configuration

Machine UI Authentication:	Locally on the Device
Home:	Unlocked
Jobs:	Unlocked
Device:	Unlocked
Device Website Authentication:	Locally on the Device
Authorization:	Locally on the Device
Retrieve E-mail from LDAP:	Enabled

Authentication Server:

Xerox Secure Access:	Kerberos
-----------------------------	----------

Audit Log:	Disabled
-------------------	----------

IP Sec:	Enabled
----------------	---------

IP Filtering:	Disabled
----------------------	----------

Security Certificates

Machine Certificate:	Signed
Root Certificates Installed:	48

802.1x:	Disabled
----------------	----------

Job Data Removal:	Disabled
--------------------------	----------

FIPS 140-3:	Disabled
--------------------	----------

TLS:	TLS 1.2 and TLS 1.3
-------------	---------------------

TLS Hash:	SHA-1, SHA-256 and above
-----------	--------------------------

Trellix Embedded Control:	Enhanced Security
----------------------------------	-------------------

Troubleshooting Print Quality

Your Xerox® AltaLink® C8130/C8135/C8145/C8155/C8170 Color Multifunction Printer is designed to produce high-quality color prints consistently. If you observe print-quality problems, use the information on these pages to troubleshoot the problems. For detailed online support information, go to www.xerox.com/office/support.

CAUTION: The Xerox® warranty, Service Agreement, or Total Satisfaction Guarantee does not cover damage caused by using unsupported paper, transparencies, or other specialty media. The Total Satisfaction Guarantee is available in the United States and Canada. Coverage can vary outside of these areas. For details, contact your local representative.

Paper Type

CAUTION: If you change the type of paper in the tray, change the paper type at the control panel to match the paper in the tray. If you fail to change the paper type, it can cause print-quality problems and damage the fuser.

For the best results, only use recommended Xerox® paper and media. Xerox® paper and media are guaranteed to produce excellent results on your Xerox® AltaLink® C8130/C8135/C8145/C8155/C8170 Color Multifunction Printer. To order Xerox® paper and media, go to www.xerox.com/office/supplies.

For a complete list of recommended paper for your printer, go to:

- North America: www.xerox.com/rmlna
- Europe: www.xerox.com/rmleu

Solving Print-Quality Problems

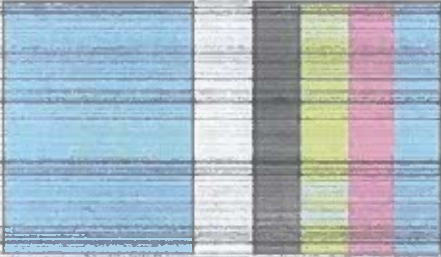
Use the following tables to find specific solutions to print-quality problems.

Note: The images that appear represent long-edge feed prints. If you print short-edge feed, the print-quality defects are rotated 90 degrees. The images that appear are for reference only. Not all pages represented are printed.

Solving Print-Quality Problems

Problem

Light Lines or Streaks in One Color

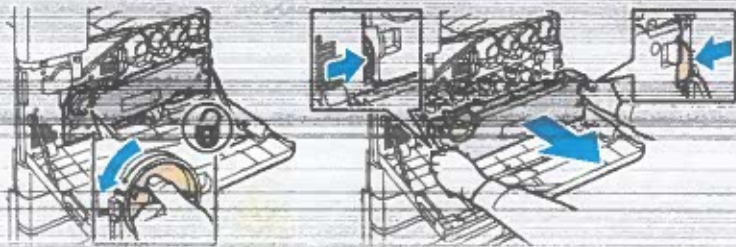


Solution

1. Open the front cover.

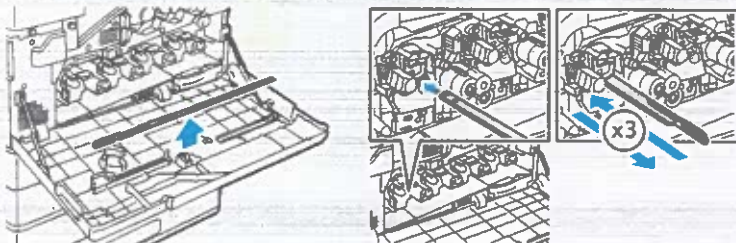


2. To unlock the belt tension lever, on the left side of the printer, rotate the belt tension lever, then open the drum cartridge cover.




3. Pull out the LED print head cleaner until it stops, then move it all the way in and out two or three times. Repeat this process for all four toner units.

Note: Ensure that you pull the LED print head cleaners out as far as they will go. Push them in as far as they will go. Do not use excessive force.


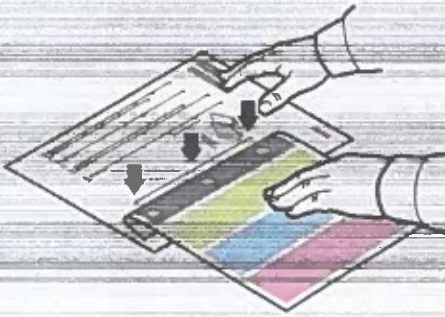



If the problem persists, check if the drum cartridge is causing the problem. To check, switch the suspected drum cartridge with another drum cartridge of a different color. If the problem occurs where you move the suspected drum cartridge, replace the suspected drum cartridge.


Solving Print-Quality Problems (continued)

Problem	Solution
Incomplete Fusing Toner appears to be missing from the print, or rubs off easily. 	<ol style="list-style-type: none"> 1. Verify that the paper you are using is the correct type for the printer and is properly loaded. For a complete list of recommended paper for your printer, go to: <ul style="list-style-type: none"> – North America: www.xerox.com/rmlna – Europe: www.xerox.com/rmleu 2. Verify that the paper type is selected on the control panel and in the print driver. 3. If the problem persists, do one of the following: <ol style="list-style-type: none"> a. For dedicated trays, log in as admin, touch Device > Tools > Device Settings > Paper Management > Tray Settings. Select the tray, touch Edit, then change the paper type. <p>Note: To change the size, type, or color of paper in a dedicated tray when the control panel is locked, log in as the system administrator.</p> <ol style="list-style-type: none"> b. For trays that are set to Fully Adjustable: <ul style="list-style-type: none"> • Trays 1–4 and 6: Open, then close the selected paper tray. • Tray 5: Remove, then reinsert the paper. <p>The control panel prompts you to confirm or change the paper type.</p> c. At the touch screen, touch Type, then do one of the following: <ul style="list-style-type: none"> • Select the correct paper type, then touch Confirm. • Select the next heavier type of paper, then touch Confirm. <p>Note: Paper types from lightest to heaviest are:</p> <ul style="list-style-type: none"> • For uncoated paper: Plain, Lightweight Cardstock, Cardstock, and Heavyweight Cardstock. • For coated paper: Lightweight Glossy Cardstock, Glossy Cardstock, and Heavyweight Glossy Cardstock.



Solving Print-Quality Problems (continued)

Problem	Solution
<p>Repeating Defects</p> <p>Spots or lines appear at regular intervals on the page in the direction that the paper moves through the printer in all colors or in non-printed areas.</p> 	<ol style="list-style-type: none"> 1. At the control panel, touch Device > Tools > Troubleshooting > Support Pages > Repeating Defects Page > Print. The Repeating Defects Page prints with instructions for identifying defective units. 2. To correct the problem, replace items identified on the Repeating Defects Page. 
<p>Spots or lines appear at regular intervals on the page, in the direction the paper moves through the printer, and in one color only.</p> 	<ol style="list-style-type: none"> 3. If you replaced the the transfer roller, reset the counter: <ol style="list-style-type: none"> a. At the control panel, press Log-In. Enter system administrator login information, then touch Enter. For details, refer to the <i>System Administrator Guide</i>. b. Touch Device > Tools > Device Settings. c. Scroll, then touch Supplies > Supply Counter Reset. d. Touch Second Bias Transfer Roll. e. Touch Reset Counter. f. To close the pop-up window, touch X, touch admin, then select Logout.

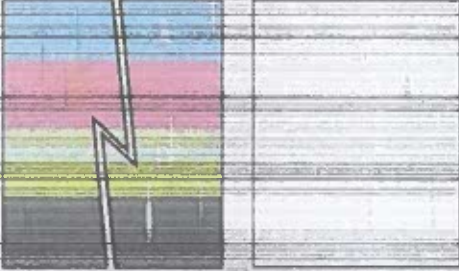
Solving Print-Quality Problems (continued)

Problem	Solution
<p>Offset Image</p> <p>The most common offset is toner that appears to be reprinted on the page and placed about 95 mm (3.75 in.) across the page in the direction that the paper moves through the printer.</p> <p>Note: For a different distance, use the Repeating Defects Page to identify the cause.</p> 	<ol style="list-style-type: none"> 1. Verify that the paper you are using is the correct paper type for the printer and is properly loaded. For a complete list of recommended paper for your printer, go to: <ul style="list-style-type: none"> – North America: www.xerox.com/rmlna – Europe: www.xerox.com/rmleu 2. Verify that the paper type is selected on the control panel and in the print driver. Note: To change the size, type, or color of paper in a dedicated tray when the control panel is locked, log in as the system administrator. 3. If the problem continues, do one of the following: <ol style="list-style-type: none"> a. For dedicated trays, log in as admin, touch Device > Tools > Device Settings > Paper Management > Tray Settings. Select the tray, touch Edit, then change the paper type. b. For trays that are set to Fully Adjustable: <ul style="list-style-type: none"> • Trays 1–4 and 6: Open, then close the selected paper tray. • Tray 5: Remove, then reinsert the paper. The control panel prompts you to confirm or change the paper type. c. At the touch screen, touch Type, then do one of the following: <ul style="list-style-type: none"> • Select the correct paper type, then touch Confirm. • Select the next heavier paper type, then touch Confirm. Note: Paper types from lightest to heaviest are: <ul style="list-style-type: none"> • For uncoated paper: Plain, Lightweight Cardstock, Cardstock, and Heavyweight Cardstock. • For coated paper: Lightweight Glossy Cardstock, Glossy Cardstock, and Heavyweight Glossy Cardstock. d. To identify the cause, use the Repeating Defects Page. For details, refer to the previous page.

Solving Print-Quality Problems (continued)

Problem	Solution
<p>Heavy Coverage Appears Mottled or Blotchy</p> <p>Blacks Appear Blue</p> 	<ol style="list-style-type: none"> 1. Verify that the paper you are using is the correct type for the printer and is properly loaded. For a complete list of recommended paper for your printer, go to: <ul style="list-style-type: none"> – North America: www.xerox.com/rmlna – Europe: www.xerox.com/rmleu 2. Verify that the paper type is selected on the control panel and in the print driver. <p>If the problem continues, call for service.</p>
<p>Colors Align Incorrectly</p> <p>Color has shifted outside the designated area or is superimposed over another color</p> 	<p>Open, then close the front door. The printer performs an automatic registration calibration with the next print.</p>
<p>All Colors Too Light or Too Dark</p> <p>Colors appear faded or too dark on print or copy.</p>	<ol style="list-style-type: none"> 1. Verify that the paper you are using is the correct type for the printer and is properly loaded. For a complete list of recommended paper for your printer, go to: <ul style="list-style-type: none"> – North America: www.xerox.com/rmlna – Europe: www.xerox.com/rmleu 2. Verify that the paper type is selected on the control panel and in the print driver. 3. Calibrate the printer colors. The calibration procedure adjusts the printer color balance and lightness level. At the control panel, touch Device > Tools > Troubleshooting > Calibration > Print Calibration or Copy Calibration. Follow the onscreen instructions to run the calibration procedure. <p>Note: For information about changing the Lightness setting in the PostScript print driver for your operating system, refer to the <i>Printing</i> chapter of the <i>User Guide</i>.</p>

Solving Print-Quality Problems (continued)

Problem	Solution
<p data-bbox="86 369 376 398">Lines, Smudges, or Streaks</p> <p data-bbox="86 407 558 465">Dark or light marks appear on the page in all colors and/or in non-printed areas.</p> 	<ol style="list-style-type: none">1. Verify that the paper you are using is the correct type for the printer and is properly loaded. For a complete list of recommended paper for your printer, go to:<ul style="list-style-type: none">– North America: www.xerox.com/rmlna– Europe: www.xerox.com/rmleu2. Verify that the paper type is selected on the control panel and in the print driver.3. If the problem persists, follow these steps:<ol style="list-style-type: none">a. At the control panel, touch Device > Information Pages > Troubleshooting Print Quality Page > Print. The Repeating Defects Page prints with instructions for identifying defective units.b. To correct the problem, replace the items identified on the Repeating Defects Page.4. If the problem continues, replace the transfer belt cleaner. If you replace the transfer belt cleaner, reset the counter:<ol style="list-style-type: none">a. At the control panel, press Log In. Enter system administrator login information, then touch Done. For details, refer to the <i>System Administrator Guide</i>.b. Touch Device > Tools > Device Settings.c. Scroll, then touch Supplies > Supply Counter Reset.d. Touch Transfer Belt Cleaner.e. Touch Confirm Reset.f. To close the pop-up window, touch X, touch admin, then select Logout.

Solving Print-Quality Problems (continued)

Problem	Solution
Poor Transparency Print Quality Print-quality defects are occurring on transparency film: <ul style="list-style-type: none"> • Light or dark spots • Smeared toner • Light bands on print 	Use only Xerox® Transparencies. CAUTION: Using non-Xerox® transparencies can cause print-quality problems or damage to the fuser. Damage caused by using unsupported media is not covered by the Xerox® Warranty, Service Agreement, or Total Satisfaction Guarantee.
Grays are Not Neutral The grays on the printed page are not neutral; they contain color tints.	Calibrate the printer colors. The calibration process adjusts the printer color balance. <ol style="list-style-type: none"> 1. At the control panel, touch Device > Tools > Troubleshooting > Calibration > Print Calibration. 2. Follow the onscreen instructions to run the Print Calibration procedure.
Colors Vary Between Computers The colors printed from one computer do not match the colors printed from a different computer.	<ol style="list-style-type: none"> 1. Confirm that the print driver settings for Print Quality, Color Correction, and Color By Words are identical on both computers. 2. Adjust the settings as needed. Note: Print driver settings override the settings that are made at the printer control panel.
Colors Do Not Match The color produced by the printer is different from the color that it must match.	For more information about color matching, go to the Online Support Assistant at www.xerox.com/office/support .
Printed Colors Do Not Match Monitor Colors The color produced by the printer looks different from the color that appears on the computer monitor.	To view information about color matching between the monitor and the printed document, go to the Online Support Assistant at www.xerox.com/office/support .

Print-Quality Settings

The Print-Quality mode and Color-Corrections options directly control the quality of your prints. You can change these settings in the print driver. Select the setting that is best suited for your print job.

Print-Quality Mode

- **Enhanced mode** is the general-purpose mode for crisp, bright color prints. Enhanced mode balances speed with quality.
- **High Resolution mode** is a high-quality mode that creates fine lines and detail. High Resolution mode is recommended for vibrant, saturated color prints. High Resolution mode balances quality over speed.
- **Toner Saver mode** reduces the amount of toner used for print jobs and is useful for draft-quality output. Print quality is slightly lower than using Standard mode.

Color Corrections

Color corrections are available on the Image Options tab in the print driver. The Preview window appears on the right side of the Image Options tab. When the Preview check box is selected, color correction appears in the Preview window. Selecting and clearing the Preview check box allows you to compare the corrected image to the uncorrected image.

To adjust the color characteristics of your print job, select the Color Correction tab, then select options as needed.

- **Xerox Black and White Conversion** converts the colors to grayscale, producing a black and white print job. This setting is useful for creating black and white master documents for photocopying or faxing.
- **Color Correction** provides options to match the printer colors as closely as possible to colors on other devices, such as your computer screen or a printing press.
 - **Automatic** applies the best color correction to each graphic element of the document: text, artwork, and photographs.
 - **Simulate LCD Display** approximates the print job color to the colors on a LCD computer monitor.
 - **sRGB Display** approximates the print job color to an RGB (red, green, blue) display.
 - **None** removes all color correction. This option is the best choice when working with color specified within your application or operating system.
- **Xerox Automatic Color** applies the best color correction to each graphic element of the document, including text, artwork, and photographs.
- **Custom Automatic Color** provides more options for customizing colors in your print job. Use one selection to adjust the color of the text and graphics. Use the other selection to adjust the color correction applied to images. You can apply a wide range of color options to each element to simulate the outputs of different color devices.

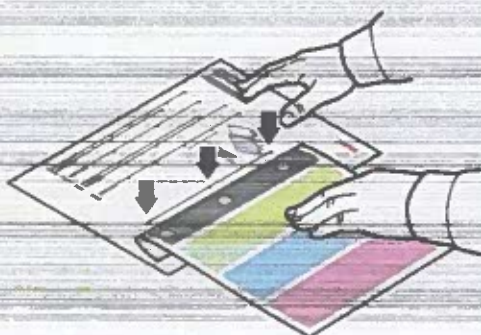
To adjust colors using descriptive phrases, select the **Color By Words** tab. From the menus, select the phrases to build a sentence that describes the color adjustment that you want. You can build more than one sentence for the print job, affecting one color or an entire range of colors.

To change settings for each individual color parameter, select the **Color Adjustments** tab, then adjust the sliders. The sliders allow you to select a continuous range of adjustment for each of the following:

- Lightness
- Contrast
- Saturation
- Cyan to Red
- Magenta to Green
- Yellow to Blue

For more information on color matching and ICC profiles, go to www.xerox.com/office/support.

Repeating Defects



To identify the component causing the defect, compare your print sample against the measurements shown.

To diagnose a defect on the transfer belt:

1. Print eight Letter/A4 size pages long-edge feed. Verify that the same defect appears on every fourth page.
- Or
2. Print four Tabloid/A3-size pages. Verify that the same defect appears on every other page.

Call for service for this defect.

95 mm (3.74 in.)
38 mm (1.50 in.)
Drum Cartridge

65 mm (2.55 in.)
Second Bias Transfer Roll

88 mm (3.40 in.)
Fuser Pressure Roll (Service only)

96 mm (3.78 in.)
Fuser Heat Belt (Service only)

33 mm (1.29 in.)
Developer Roller (Service only)

